

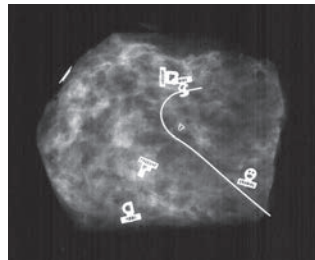
# MARGINMAP<sup>®</sup>

## SPECIMEN ORIENTATION CHARMS

Beekley Medical<sup>®</sup>  
when your diagnosis must be right<sup>®</sup>

### MarginMap

Six distinctly shaped charms clearly identify the margin orientation of surgical specimens and may help reduce questions in radiology and pathology that can lead to delays, errors, and unnecessary re-excisions.



MarginMap on specimen radiograph



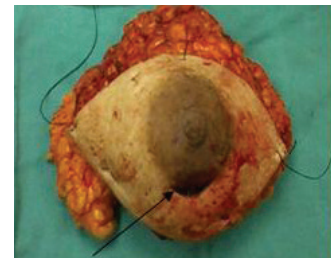
MarginMap on breast specimen

### Old Methods

Varying methods for communicating margin orientation require detailed explanation of marking method and time-intensive interpretation in radiology and pathology, potentially increasing the chance of communication errors.<sup>1</sup>



Surgical clips on breast specimen radiograph



Varying length sutures on breast specimen

<sup>1</sup> Molina MA, Snell S, Franceschi D, et al. Breast specimen orientation. *Ann Surg Oncol.* 2009;16(2):285-288. Epub December 3, 2008.

*"...MarginMap has facilitated a standardized process for surgical margin identification and specimen orientation. Its use has decreased the need for re-excision surgeries by facilitating a process of timely margin assessment before the patient leaves the OR Suite."*

Mary Beland, RN, MSN, CNOR, Bristol Hospital, Bristol, CT



**MarginMap<sup>®</sup>**  
10mm charms

REF 308  
QTY 15 / Box



**MarginMap<sup>®</sup>**  
5mm charms

REF 304  
QTY 15 / Box

Call 1.800.233.5539 • Fax 1.800.735.1234  
Visit [beekley.com](http://beekley.com) • Email [info@beekley.com](mailto:info@beekley.com)

Customers outside the U.S. – Contact your local distributor for pricing and product availability.  
To locate a distributor call +1.860.583.4700 or email [international@beekley.com](mailto:international@beekley.com)

Manufactured by Beekley Corporation  
One Prestige Lane, Bristol, CT 06010  
Tel: 1.800.233.5539 Fax: 1.800.735.1234 [beekley.com](http://beekley.com)  
BEEKLEY, BEEKLEY MEDICAL, MARGIN MAP, and WHEN YOUR DIAGNOSIS MUST BE RIGHT are Reg. U.S. Pat. & Tm. Off. BEEKLEY is a Registered Community Trademark. BEEKLEY is a registered trademark in Canada.  
© 2019 Beekley Corporation. All rights reserved.

#### WARNINGS AND PRECAUTIONS:

- Device and inner package sterile unless outer package has been opened or damaged.
- No part of this product should be left in the patient for any reason
- Single patient use only; Do not reuse
- Do not resterilize
- Not made with natural rubber latex
- Lead-Free

STERILE R



BLOG: [BEEKLEY.COM](http://BEEKLEY.COM)

REV: MM\_INF\_1119