

AccuGrid®

Disposable Specimen Radiography System with Localizing Grid

Beekley Medical®
when your diagnosis must be right™

- **Communicate without Obscuring:**

Two sets of radiolucent grid coordinates lie below the specimen for clear and precise communication of area of interest.

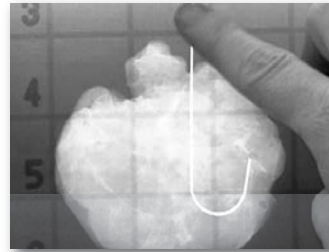
- **Maintain Specimen Orientation and Tissue Integrity:**

Special coating on grid helps prevent specimen movement after imaging with light, controlled compression for more accurate correlation of specimen to radiograph in pathology.

- **Protect Staff from Potential Pathogens:**

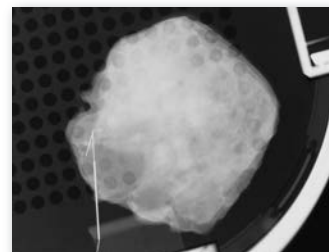
Safety sealed biohazard bag helps prevent fluids from leaking during transport between surgery, radiology, and pathology.

AccuGrid



Grid coordinates easily visualized beneath tissue. Area of interest communicated precisely.

Other Method



Perforated compression plate has "honeycomb" artifact on radiograph. Localization lost when compression plate with grid coordinates removed.



REF 300 QTY 12 / Box
AccuGrid 4.65"



REF 302 QTY 10 / Box
AccuGrid 5.65"

Compatible with cabinet X-ray systems; flat design requires minimal storage.

Call 1.800.233.5539 • Fax 1.800.735.1234
Visit beekley.com • Email info@beekley.com

Customers outside the U.S. – Contact your local distributor for pricing and product availability.
To locate a distributor call +1.860.583.4700 or email international@beekley.com

Manufactured by Beekley Corporation
One Prestige Lane, Bristol, CT 06010 USA
Tel: 1.800.233.5539 or +1.860.583.4700
Fax: 1.800.735.1234 beekley.com

ACCUGRID, BEEKLEY, BEEKLEY MEDICAL, and WHEN YOUR DIAGNOSIS MUST BE RIGHT are Reg. U.S. Pat. & Tm. Off. ACCUGRID and BEEKLEY are Registered Community Trademarks. BEEKLEY is a registered trademark in Canada.

© 2019 Beekley Corporation. All rights reserved.

WARNINGS AND PRECAUTIONS:

- Non-Sterile
- Do Not Reuse
- Observe Biohazard Procedures, Dispose of Properly
- Open or puncture only in biohazard safe environment



EMERGO EUROPE
Prinsessegracht 20
2514 AP The Hague
The Netherlands



REV: AC_INF_1119