

CT Treatment Planning

Finding the zero slice

The goal of the radiation therapist is to accurately locate the central axis or zero slice on the tumor field for treatment planning.

A marker with a distinct shape that clearly defines the area of focus as you are scrolling through the images can save you time and improve accuracy.

A marker with a distinct shape

Using the CT-SPOT® crosshair in the formation of an "X" during treatment planning creates a unique shape that helps radiation oncology team determine the zero slice.

Gayle Crowley, a Radiation Therapist at the Harold Liever Cancer Center in Waterbury, CT, describes how she utilizes this technique.

"We all know what it's like scrolling through CT images looking for those magical marks or the 3 points on the patient," Gayle told us in an interview.

"During CT set-ups we use CT-SPOT® crosshair for our 3-point set-ups and we place them on the patient in an "X" configuration. (Figure 1)

The lasers on the patient's skin are projected as a "T" therefore, placing the CT-SPOT® crosshair as an "X" you know that is the center of the mark on your patient's skin.

During imaging it helps us identify the zero slice or central axis of the treatment field to accurately line these up.

As you scroll through the slices you will first see the two individual legs of the "X." (Figure 2)

As you approach the center of the "X" you will notice a distinct shape." This distinct shape makes it easier for the radiation therapist to discern the zero slice.

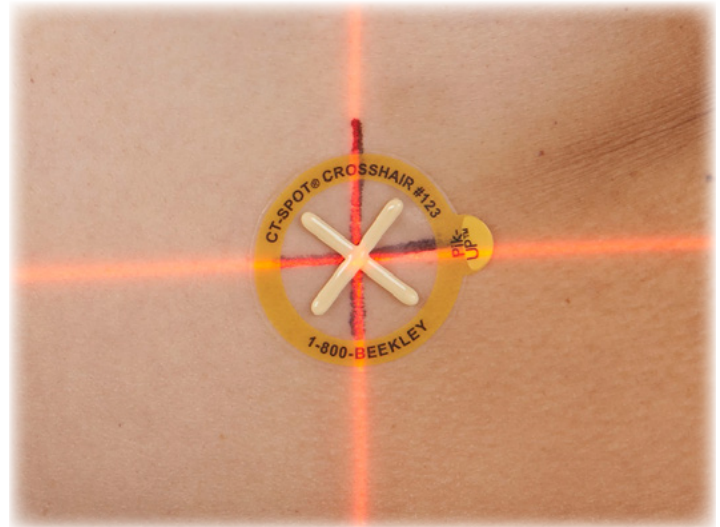


Figure 1. CT-SPOT Crosshair placed in the X configuration.

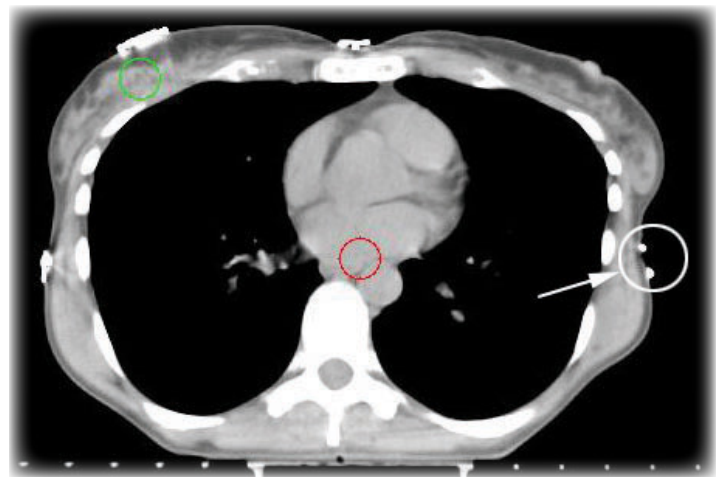


Figure 2. Unique image of CT-SPOT Crosshair used in 3pt set-up.

[Product Safety Information](#)



Manufactured by Beekley Corporation
One Prestige Lane, Bristol, CT 06010 USA
Tel: 1-800-233-5539 or +1-860-583-4700 Fax: 1-800-735-1234 www.beekley.com
Made in the USA

SPOT is a Reg. U.S. Pat. & Tm. Off. SPOT is a Registered Community Trademark.
© 2016 Beekley Corporation. All rights reserved.

CT-SPOT® Crosshair

Ideal for marking 3-point set-ups, isocenters, and field borders, these unique markers image brightly during simulation for visibility through multiple slices. Can also be used to communicate skin lesions, scars, and specific points of pain on patient to be included or excluded from the field or to mark the location of a port or drain on patient.



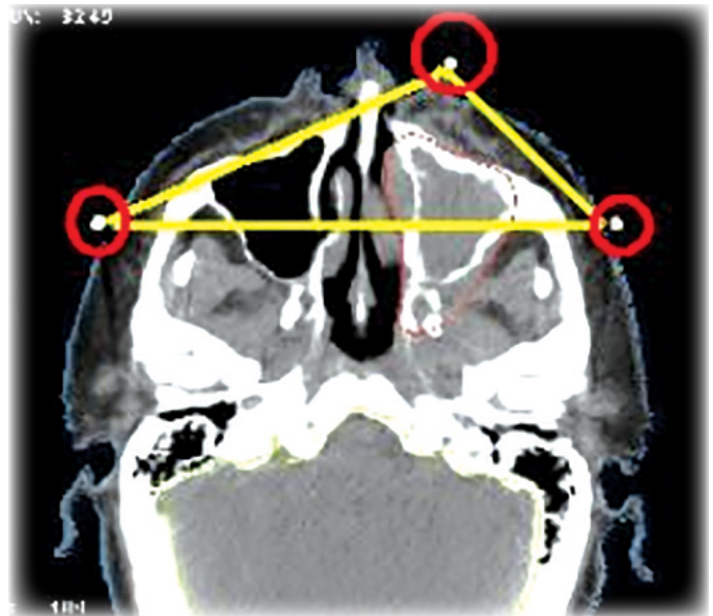
CT-SPOT®

REF 123 QTY 50 / Box

- 2.0cm x 2.0cm non-metallic crosshair
- For 3-point set-ups, isocenters, and field borders



CT-Spot Crosshair used on mask in 3pt set-up



CT-SPOT Crosshair used to triangulate on head mask for isocenter verification