

CT Treatment Planning

Accuracy in treatment planning affects the efficacy of the treatment

The challenge every radiation oncology department faces is to destroy cancer cells and stop the growth of the tumor while limiting harm to nearby healthy tissue.

Accuracy is measured in millimeters and the precision of the CT simulation will affect subsequent treatments. Consequently, the quality of each tool the radiation therapist uses in set-ups and treatment planning will make a difference.

Linear markers are such tools.

Used to mark field borders, tangents, scars, sarcomas, and breast tissue, one should expect their linear marker to be flexible, contour to the skin, and clearly denote the area of concern in imaging and CT simulation without lifting or coming off.

Linear markers without these key attributes can negatively affect the accuracy and efficacy of the treatment.

Inflexible wires are often cut into small strips for better handling. Not only is this process of cutting several small strips time consuming and wasteful, it can also result in unintended inaccuracies when marking field borders and treatment areas or over/under radiation of the target area.

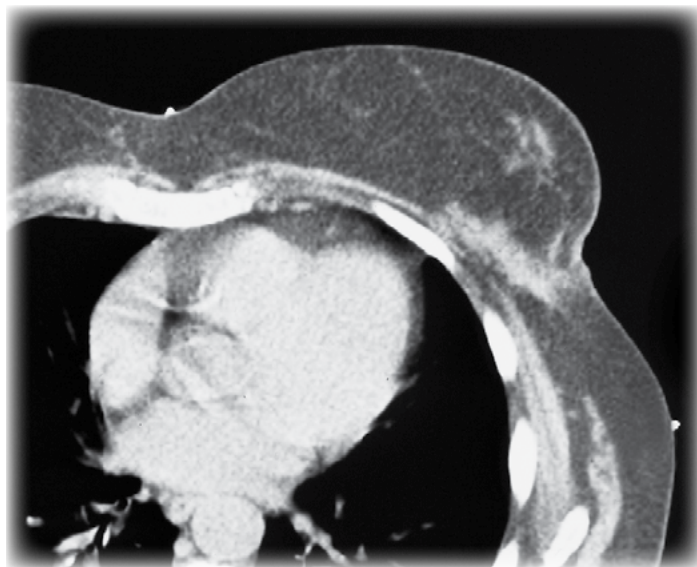
Using tape and wire to define field borders does not provide the desired flexibility nor the appropriate accuracy. Tape sticks to the skin with the wire caught underneath.

More targeted placement, more first time accuracy

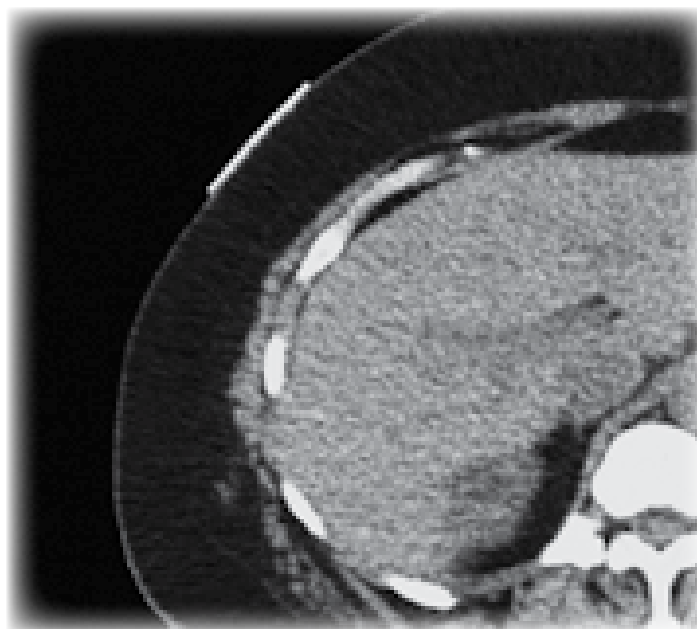
Beekley Medical®'s CT-SPOT® lines are flexible and contour easily around corners. With a medical-grade, latex-free adhesive, it provides the "just right" stick that radiation therapists value.

The non-metallic line images brightly on every slice that it appears on during simulation while also reducing artifact and streaking.

This makes it easier for the therapist or radiation oncologist to measure and align the marker with the desired area of treatment.



CT-SPOT® Line marking medial and lateral breast tangents



Non-metallic CT-SPOT® Line images without artifact

[Product Safety Information](#)



Manufactured by Beekley Corporation
One Prestige Lane, Bristol, CT 06010 USA
Tel: 1-800-233-5539 or +1-860-583-4700 Fax: 1-800-735-1234 www.beekley.com
Made in the USA

BEEKLEY, BEEKLEY MEDICAL, FLORALS and SPOT are Reg. U.S. Pat. & Tm. Off.
BEEKLEY and SPOT are Registered Community Trademarks. BEEKLEY is a registered trademark in Canada.
© 2016 Beekley Corporation. All rights reserved.

CT-SPOT® Line

Continuous linear markers designed to delineate fields for accurate CT treatment planning calculations. Flexible line contours easily around corners. Ideal for marking field borders, tangents, scars, sarcomas and larger treatment areas.



CT-SPOT®

REF 118 **QTY 320cm cut to measure roll / Box**

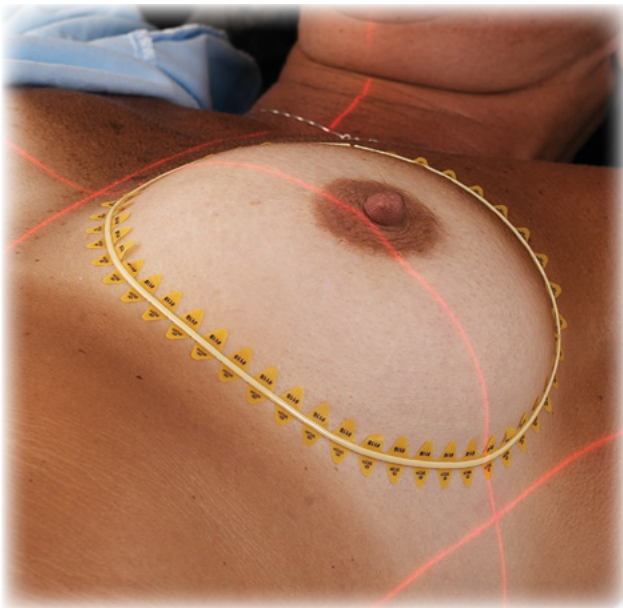
- 2.0mm diameter non-metallic line
- For marking scars and field borders



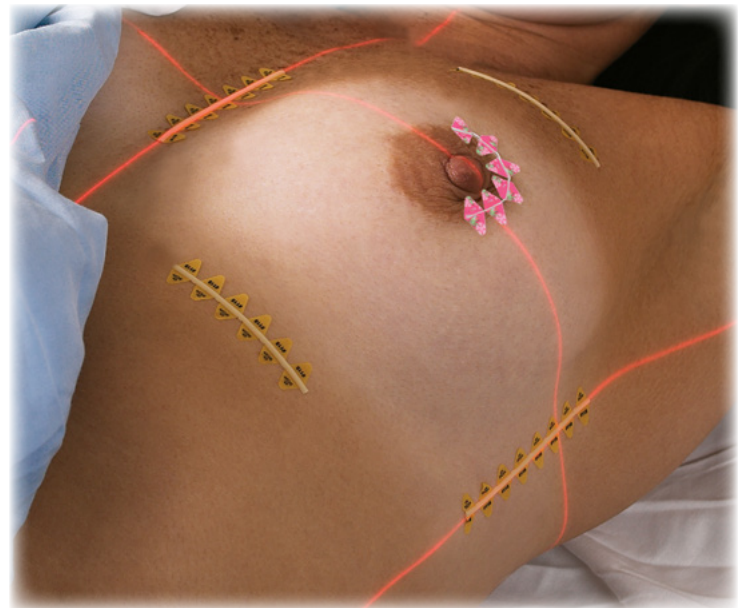
S-SPOT®

REF 607 Florals® **QTY 363cm cut to measure roll / Box**

- .33mm diameter radiopaque line
- Burnout-resistant brighter image
- For marking scars and field borders



Continuous strip of CT-SPOT® Line identifies treatment area by encircling entire breast



Strips of CT-SPOT® line used for tangents and field borders. Scar is marked with S-SPOT® .33mm metallic line