

TomoSPOT®

Skin Markers for 3D Breast Tomosynthesis

TomoSPOT skin markers are tested and proven for use with the new, more sensitive 3D mammography equipment. The 3D mammogram reveals greater tissue detail in high resolution slices and increases the number of images a radiologist must review.

Combining tomosynthesis with a TomoSPOT skin marking protocol supports your efforts to achieve your lowest possible recall rate, higher specificity, and has been proven to reduce radiologist reading time on average by 1.34 minutes per case.¹

- reduce risk of false negatives and false positives
- reduce unnecessary additional views and callbacks
- identify, document, and communicate breast anatomy (from year to year and when transferring images)
- reduce interpretation time



¹ Abstract Preview: Radiologist Reading Time in Digital Breast Tomosynthesis (DBT) comparing the consistent versus sporadic use of a five shape breast marking system. Alex Merkulov, MD, Department of Diagnostic Radiology, University of Connecticut Farmington, CT; unpublished data, June 2014.

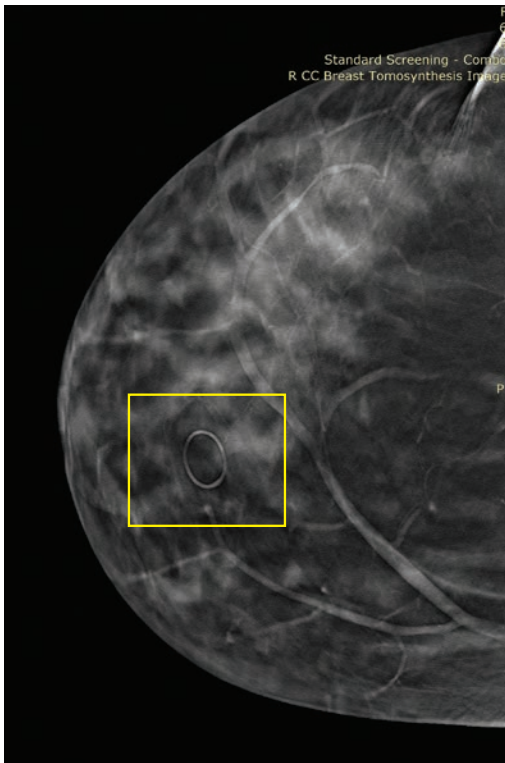


Figure 1
Breast tomosynthesis image – standard screening right CC view, slice 56 demonstrates a mole marker indicating the location of a skin lesion (see highlighted box).

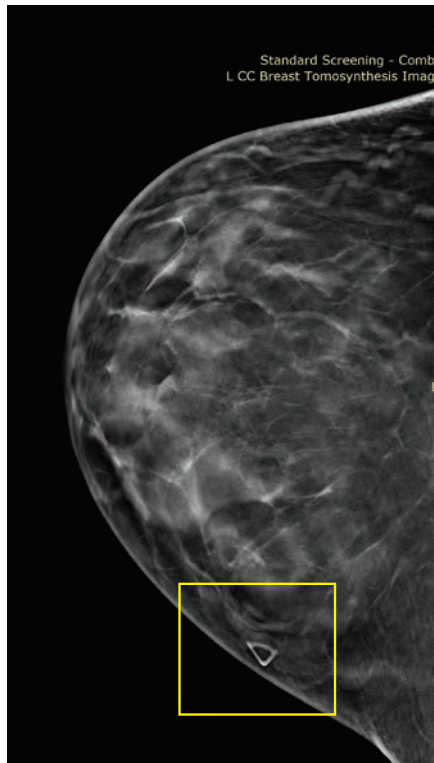


Figure 2
Breast tomosynthesis image – standard screening left CC view, slice 60 demonstrates a palpable mass marker indicating the location of a palpable finding (see highlighted box).



Figure 3
Breast tomosynthesis image – standard screening right MLO view, slice 1 demonstrates a linear scar marker indicating the location of a previous surgical event (see highlighted box).

For optimal 3D imaging, **TomoSPOT skin markers** are created with our lowest density formula available.

- Subtly highlights areas of interest or concern on or in the breast
- Radiolucent with clearest visualization of tissue detail over other brands of skin markers
- Reduces slinky artifact



Order your Hummingbird® TomoSPOT® skin markers today.

Five distinctive shapes to identify nipples, moles, scars, palpable masses, and non-palpable areas of concern/pain. Produced on the premium Soft 'n Stretchy®, pinch-free adhesive backing for maximum patient comfort under compression.



TomoSPOT®
Nipple Markers for 3D Breast Tomosynthesis

REF 781 **QTY** 92

- 2.3mm low-density, non-metallic pellet
- Soft 'n Stretchy® pinch-free material
- adhesive-free center



THE RAISED CIRCLE ONLY
FROM BEEKLEY MEDICAL

TomoSPOT®
Mole Markers for 3D Breast Tomosynthesis

REF 782 **QTY** 54

- see-through ring
- Soft 'n Stretchy® pinch-free material



TomoSPOT®
Scar Markers for 3D Breast Tomosynthesis

REF 783 **QTY** 273cm cut to measure roll/box

- see-through 1.0mm diameter line
- Soft 'n Stretchy® pinch-free material



THE RAISED TRIANGLE ONLY
FROM BEEKLEY MEDICAL

TomoSPOT®
Palpable Mass Markers
for 3D Breast Tomosynthesis

REF 784 **QTY** 116

- see-through triangle
- Soft 'n Stretchy® pinch-free material



THE RAISED SQUARE ONLY
FROM BEEKLEY MEDICAL


TomoSPOT®
Non-palpable Areas of Concern/Pain
Markers for 3D Breast Tomosynthesis

REF 785 **QTY** 58

- see-through square
- Soft 'n Stretchy® pinch-free material



Call 1.800.233.5539 • Fax 1.800.735.1234
Visit beekley.com • Email info@beekley.com



Customers outside the U.S. – Contact your local distributor for pricing and product availability.
To locate a distributor call +1.860.583.4700 or email international@beekley.com

 Manufactured by Beekley Corporation
One Prestige Lane, Bristol, CT 06010 USA
Tel: 1.800.233.5539 or +1.860.583.4700
Fax: 1.800.735.1234 beekley.com

BEEKLEY, BEEKLEY MEDICAL, SPOT, SOFT N STRETCHY, TOMOSPOT, WHEN YOUR DIAGNOSIS MUST BE RIGHT, the raised circle, the raised square, the raised triangle, the hummingbird design, the hummingbird word, and the color pink are Reg. U.S. Pat. & Tm. Off. BEEKLEY, SPOT, and TOMOSPOT are Registered Community Trademarks. BEEKLEY is a registered trademark in Canada.
© 2019 Beekley Corporation. All rights reserved.

WARNINGS AND PRECAUTIONS:

- Single Patient Use Only; Do Not Reuse 
- External Use Only; Do Not Ingest or Swallow
- Do Not Place on Compromised Skin
- Remove After Use
- Not made with natural rubber latex
- Lead-Free
- Non-Sterile 

  EMERGO EUROPE
Prinsessegracht 20
2514 AP The Hague
The Netherlands



REV: TOMO_INF_0819