

Breast Imaging Centers Share Why They Mark Every Patient with Nipple Markers In Tomosynthesis

Customer Testimonials

"We are required by our radiologists to use nipple markers. As a technologist, it helps with positioning for screenings and diagnostic cases for an accurate measurement tool for locating lesions or calcifications. Recently a patient came for a screening. **A nipple marker was used and it notified the mammographer that the nipple wasn't in profile. The mammographer took an additional image and found breast cancer that was hidden by other tissue.**"

~Lead Technologist, Waynesboro, PA

"It creates a landmark for the radiologist when they would like to state, for example, a lesion is 5cm from the nipple. It also helps the technologist center the breast on the plate. Sometimes the nipple is not in profile and can look like a lesion in the breast. In one instance, **it prevented a call back for a patient whose nipples were not located in the normal position and looked like she had a mass in her breast, but it was just her nipple.**"

~Woman's Imaging Coordinator, Gainesville, GA

"Placement of nipple markers help the technologist demonstrate the location of the nipple on mammograms. The location of the nipple can be especially challenging on patients who have architectural distortion due to surgery. Marking the nipple can also be very helpful when trying to identify subareolar masses as it helps to differentiate the nipple from a mass. A nipple marker helps the radiologist establish a reliable landmark which they can use to establish the precise distance from the nipple to lesion. **Nipple markers also help radiologists save time by eliminating confusion distinguishing nipples from lesions.** By placing a nipple marker at screening, it helps measure the precise distance from nipple to lesion if the patient comes back for diagnostic imaging.

~Technical Director, Breast Imaging, Bronx, NY

"We mark the nipples so the radiologist can get an idea if there is an issue with the nipple retracting back. Some patient's nipples will tuck under the breast when they have a mammo and this will cause an appearance of a mass for the radiologist to have to decipher. **With the use of the markers, they know it was the nipple and won't call the patient back for that possible mass. We see this fairly often where this saves the patient a call back.**

When the marker is placed at screening, it will also help the technologist be able to pinpoint a location that they are needing to work up when that patient is called back.

They can reference the marker and figure out how to measure the distance on finding the lesion when they position for extra pictures. This also helps the radiologist pinpoint the area as well when they call the patient back."

~Breast Center Manager, Amarillo, TX

"Not all nipples are in the same place, nipple markers distinguish it from breast tissue. When it comes to diagnostic imaging, **it's a cheat sheet for distance from the nipple.**"

~Mammography Supervisor, West Palm Beach, FL

"The nipple marker serves many purposes, if the nipple rolls into the breast tissue it can be confused as a mass. The nipple marker also helps identify normal anatomy. It can help with alignment to show the breast is not exaggerated medial or lateral. If a patient needs to get a diagnostic exam, we can measure from the nipple back to the area of concern to tell if we have included the correct area on our images. **I had a patient that had a retro areolar mass, with the nipple marker clearly showed it was not normal anatomy, and a true mass.** It helped the radiologist make their decision to do an ultrasound. If I had not marked the nipple, I would have had to do more mammogram imaging which is more radiation exposure and stress to the patient."

~Clinical Mammographer, Wake Forest, NC

“A nipple can roll and will look like a nodule if not in profile; we use a nipple marker to avoid patients being called back. They are a good reference point in stereotactic breast biopsy cases to help localize an area and also guide when determining where to do spot compression views, it is the first thing I use to locate an area. It helps the radiologist by being a reference point when measuring lesion distances from the nipple.”

~Mammography Technologist, Charleston, WV

“Marking the nipple helps in proper positioning by giving a visual when trying to position the nipple in perfect profile. It is especially helpful on true lateral views to ensure the breast is completely lateral.

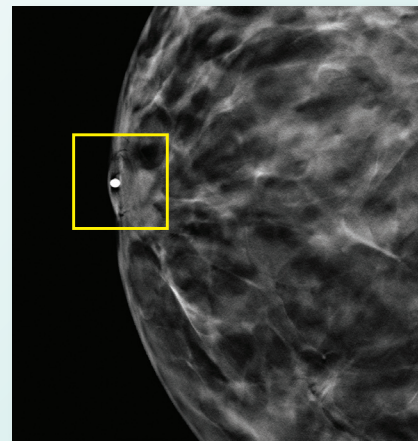
Techs and Radiologists alike use the nipple markers as a reference point/landmark for pinpointing areas of interest i.e. measuring lesions for diagnostic mammos and ultrasound... distance from nipple is often very helpful information in locating specific areas. I’ve had the rare occasion where an extremely large patient was being positioned for a true lateral view, and visualization was tough, however being able to palpate the pellet on the nipple marker enabled me to ensure the breast was in true lateral projection. **In my opinion, markers have been invaluable to me as a mammo tech for 40+ years.”**

~Lead Mammography Technologist, Warren, PA

“We mark nipples on all patients because nipples can be dense and look like the patient has an issue when they don’t. They can also help the radiologist when the nipple is inverted. The nipple marker helps the technologist by being able to strive to get the nipple in profile. For the last 16 years we have always used your nipple markers. They are the best.

I can say that when I see images from another mammography department that does not utilize skin markers, there is a big difference in the image.”


~Lead Mammography Technologist, Warren, OH



REF 781

**Order TomoSPOT® Nipple Markers today
for a more precise mammogram.
Call 1.800.233.5539 • Fax 1.800.735.1234
Visit beekley.com • Email info@beekley.com**



Customers outside the U.S. – Contact your local distributor for pricing and product availability.
To locate a distributor call +1.860.583.4700 or email international@beekley.com

 Manufactured by Beekley Corporation
One Prestige Lane, Bristol, CT 06010 USA
Tel: 1.800.233.5539 or +1.860.583.4700
Fax: 1.800.735.1234 beekley.com

BEEKLEY, BEEKLEY MEDICAL, SPOT, TOMOSPOT, WHEN YOUR DIAGNOSIS MUST BE RIGHT, the hummingbird design, the hummingbird word, and the color pink are Reg. U.S. Pat. & Tm. Off. BEEKLEY, SPOT, and TOMOSPOT are Registered Community Trademarks. BEEKLEY is a registered trademark in Canada.

© 2021 Beekley Corporation. All rights reserved.

WARNINGS AND PRECAUTIONS:

- Single Patient Use Only; Do Not Reuse 
- External Use Only; Do Not Ingest or Swallow
- Do Not Place on Compromised Skin
- Remove After Use
- Not Made with Natural Rubber Latex
- Lead-Free
- Non-Sterile 



Beekley Medical®
when your diagnosis must be right™



EMERGO EUROPE
Prinsessegracht 20
2514 AP The Hague
The Netherlands

REV: TOMO_TM-NM_0521