

mark-through GUIDELINES[®]

CT grid for localizing needle entry sites

Exclusive *all-over* adhesive backing and exceptional mark-through capability help increase accuracy of needle placement which may reduce painful re-sticks and rescans that expose the patient to additional radiation.

Distinct lead-free radiopaque lines help provide an artifact-free image. Extra spacing between lines 1 and 2 helps to confirm orientation on the image.

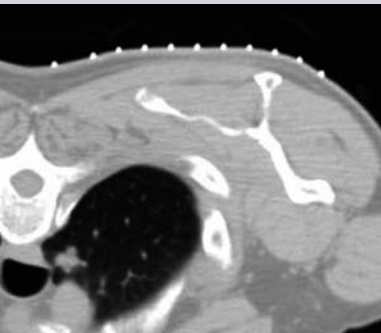


Easily mark through the material anywhere on the grid with a fine point Sharpie[®] even along the vertical radiopaque grid lines.



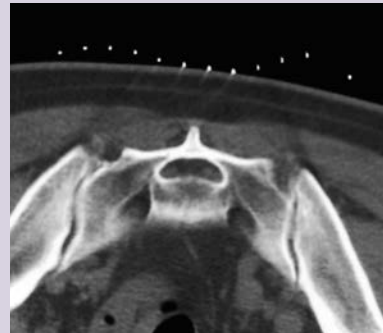
Ink instantly transfers through grid material to clearly mark entry site on skin.

MARK-THROUGH GUIDELINES



Mark-Through Guidelines conforms closely to skin line for precise localization of the needle entry site.

OTHER GRID METHODS



Other grid methods can lift off patient's skin, reducing accuracy and making it difficult to correlate to the image.



REF 219

QTY 15 / Box

- 6.25" (15.88cm) x 6.75" (17.15cm) biopsy grid
- ideal for CT-guided biopsies, drainage procedures and pain management injections

Beekley Medical[®]
when your diagnosis must be right[®]

Manufactured by Beekley Corporation
One Prestige Lane, Bristol, CT 06010 USA Tel: 1.800.233.5539 or +1.860.583.4700 Fax: 1.800.735.1234 beekley.com

BEEKLEY, BEEKLEY MEDICAL, GUIDELINES, MARK THROUGH GUIDELINES and WHEN YOUR DIAGNOSIS MUST BE RIGHT are Reg. U.S. Pat. & Tm. Off. BEEKLEY is a Registered Community Trademark. BEEKLEY is a registered trademark in Canada.

© 2019 Beekley Corporation. All rights reserved.

Sharpie[®] is a registered trademark of Rubbermaid Newell Corporation.

WARNINGS AND PRECAUTIONS:

- Non-Sterile 
- Single Patient Use Only; Do Not Reuse 
- Hypoallergenic
- Not made with natural rubber latex
- Lead-Free



EMERGO EUROPE
Prinsessegracht 20
2514 AP The Hague
The Netherlands

REV: MTGL_INF_1019