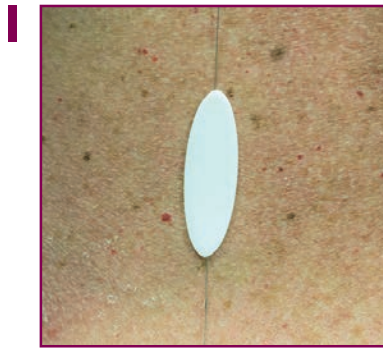


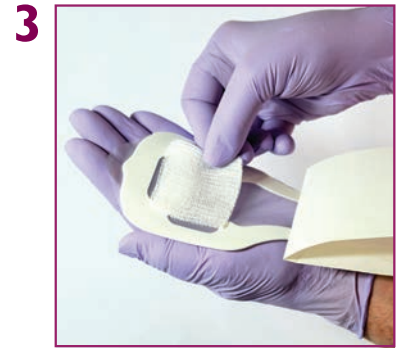
Instructions for Use



Tack down wire with oval foam tab.



Pull paper liner away from large square end to perforated line.



Place enclosed gauze under large square end or over wire exit site.



Position and adhere large square end directly over wire exit site.

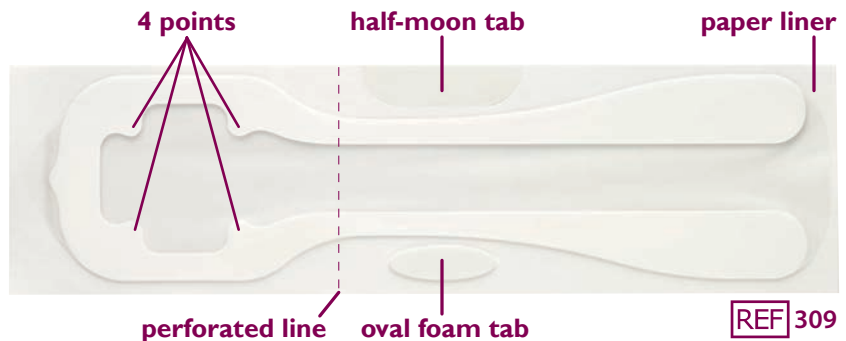


Peel off remaining paper liner and position long strip over wire. Press to apply adhesive border. If needed, cut off excess length of strip.



Pop out half-moon shaped tab from side of paper liner. Apply tab to the cut end to use as pick-up tab for removal later.

7 Prior to the surgical procedure, remove Cradles needle localization wire protectors by gently pulling up on either end.



WARNINGS AND PRECAUTIONS:

- Single Patient Use Only; Do Not Reuse (⊗)
- Remove After Use
- Non-Sterile (⚠)
- Not made with natural rubber latex