

# Beekley Medical® Skin Markers Cover Less Surface Area than Other Brands

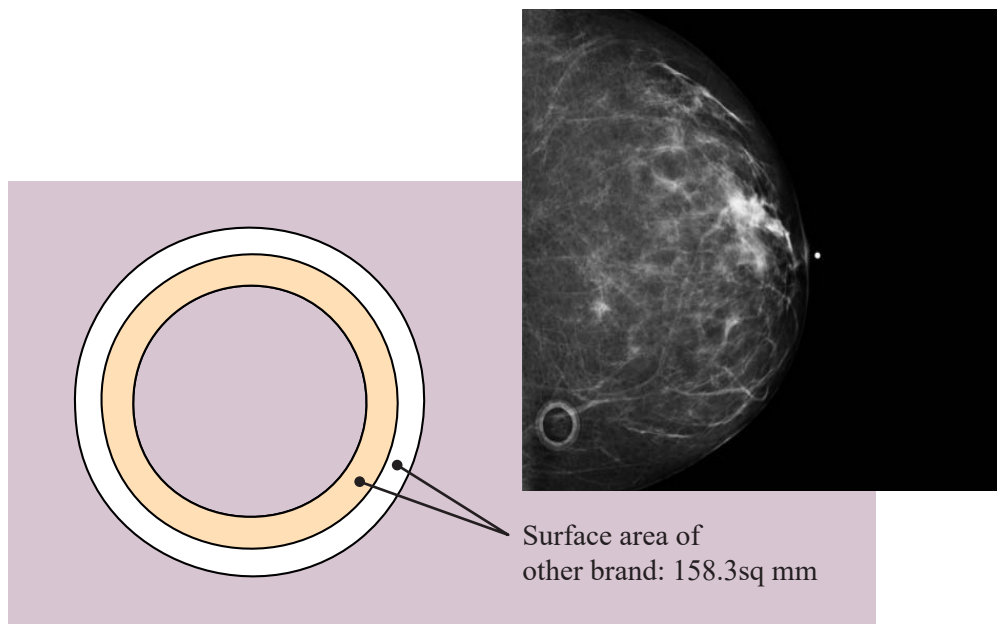
Mammographic skin markers are useful for immediately and visually communicating specific areas of interest to interpreting radiologists such as raised moles, post surgical scars, palpable and non-palpable areas of concern.

However, mammographic skin markers must communicate without hindering detectability.

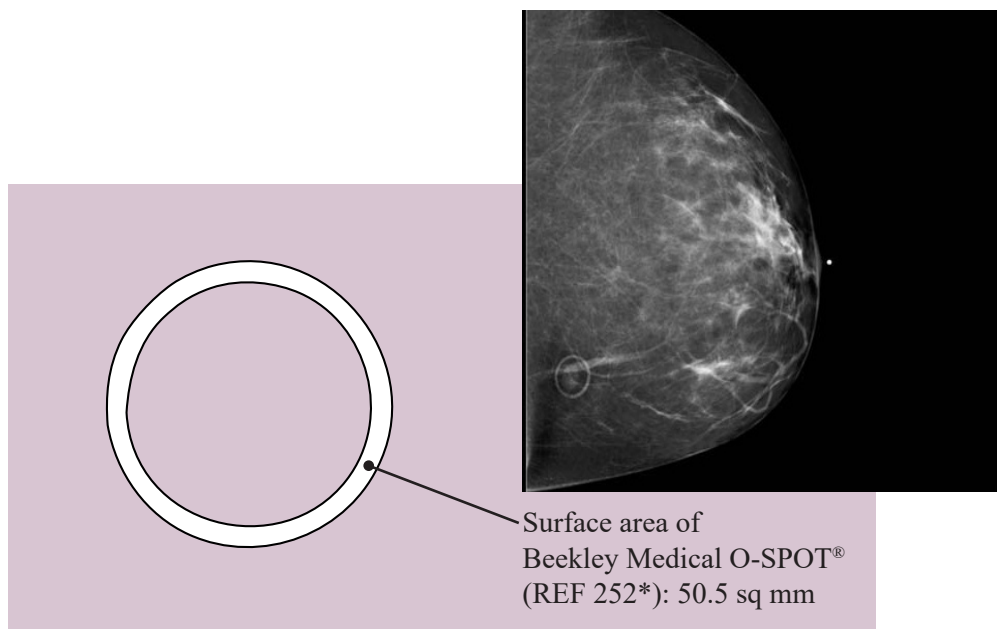
## Why Surface Area Matters

The median size of breast cancers detected by screening mammography is 7.5mm, with the smallest detectable cancer being 3mm.<sup>1</sup>

This means that skin markers should not only be see-through, but also should cover as little surface area as possible.



**Additional unnecessary breast tissue covered by other brand: 107.8 mm**



**Beekley Medical's low density mammographic skin markers cover up to 67.2% less surface area than other brands.**

<sup>1</sup>James Michaelson, PhD et al., "Estimates of the Sizes at Which Breast Cancers Become Detectable on Mammographic and Clinical Grounds," *Journal of Women's Imaging*, Volume 5, Number 1, pp 3–10

\*REF 252 has been discontinued and is comparable to REF 652