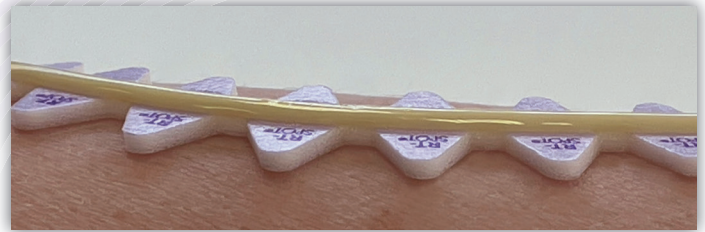


RT-SPOT[®]

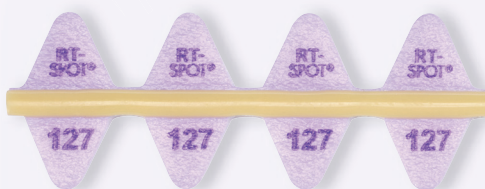
Beekley
Medical[®]
when your diagnosis
must be right[®]

The only skin marker for CT simulation that is elevated from the skin line and helps to exclude the marker from the automatic body contour

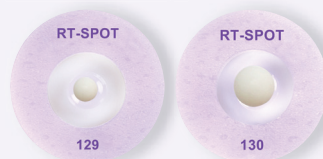
- ▶ Minimizes dose perturbation and helps ensure dose accuracy
- ▶ Saves time by reducing the need for manual contouring and density override
- ▶ Flexible and easier to form into desired shapes
- ▶ Stays in place on the skin and does not lift
- ▶ Lower density, non-metallic line, minimizes artifact



- ▶ RT-SPOT markers have medical grade adhesive foam backings that elevate them from the skin line.



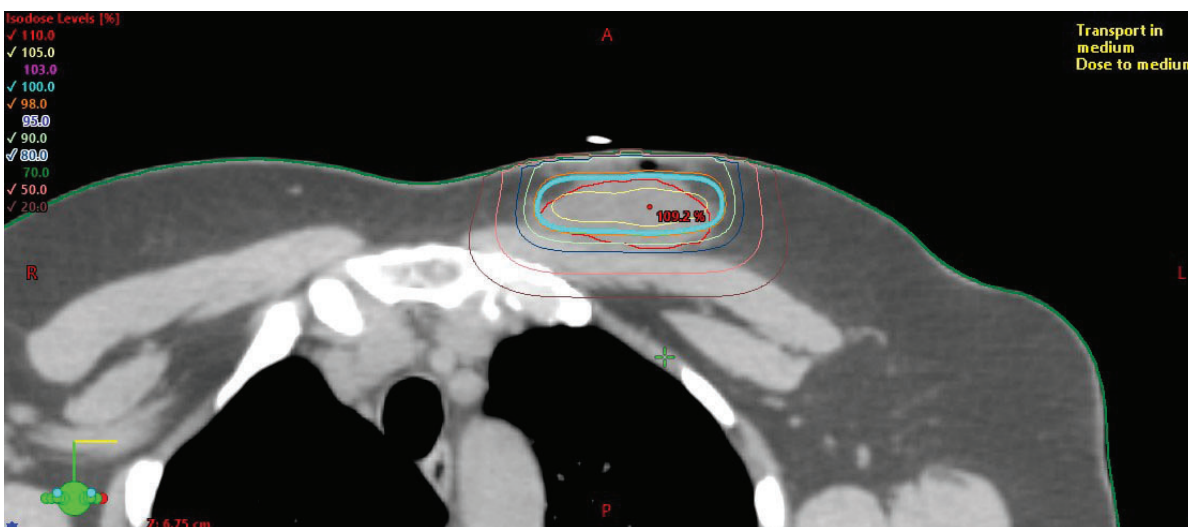
RT-SPOT Line is flexible, contours easily into desired shapes, and stays in place without lifting. Ideal for marking field borders, tangents, scars, sarcomas, and larger treatment areas.



RT-SPOT Pellets are ideal for marking 3-point setups, isocenters, and central axis. Transparent center allows for visualization of skin or thermoplastics. Available in 2.3mm and 4.0mm sizes.



RT-SPOT Crosshair's multiple slice visibility is ideal for marking 3-point setups, isocenters, and field borders. Transparent center allows for visualization of skin or thermoplastics.



- ▶ Axial CT Scan of female breast radiation patient with surgical scar identified by RT-SPOT Line. RT-SPOT Line excluded from body contour.

RT-SPOT®

Beekley Medical®
when your diagnosis
must be right®

Existing skin markers affect dose calculations and must be manually contoured out, increasing the dose planning time per patient.

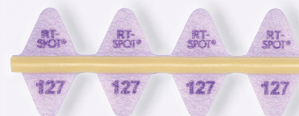
Manual contouring can be imperfect leading to dose inaccuracies or rework of treatment plans.

RT-SPOT elevated skin markers are designed to minimize dose perturbation and reduce the need for manual contouring.



▲ The moldable backing allows RT-SPOT Line to bend into various shapes – even small circles.

RT-SPOT® Line



REF 127 **QTY** 140cm
2.0mm Diameter
Elevated Non-Metallic Line

RT-SPOT® Pellet 2.3



REF 129 **QTY** 50
2.3mm
Elevated Non-Metallic Pellet

RT-SPOT® Pellet 4.0



REF 130 **QTY** 50
4.0mm
Elevated Non-Metallic Pellet

RT-SPOT® Crosshair




REF 135 **QTY** 30
2.0cm x 2.0cm
Elevated Non-Metallic Crosshair

1.800.233.5539 • info@beekley.com • beekley.com



Customers outside the U.S. – Contact your local distributor for pricing and product availability.

To locate a distributor, call +1.860.583.4700 or email international@beekley.com

 Manufactured by Beekley Corporation
One Prestige Lane, Bristol, CT 06010-7454 USA
Tel: 1.800.233.5539 or +1.860.583.4700
Fax: 1.800.735.1234 beekley.com

BEEKLEY, BEEKLEY MEDICAL, RT-SPOT, SPOT, and WHEN YOUR DIAGNOSIS MUST BE RIGHT are Reg. U.S. Pat. & Tm. Off. BEEKLEY, RT-SPOT, and SPOT are registered Community Trademarks. BEEKLEY is a registered trademark in Canada. © 2024 Beekley Corporation. All rights reserved. Pat. – beekley.com/patents

WARNINGS AND PRECAUTIONS:

- Do Not Place on Compromised Skin
- Do Not Use in Skin Folds
- Do Not Use Under Physical Bolus
- Do Not Use Under Thermoplastics
- Single Patient Use Only; Do Not Reuse 
- External Use Only
- Remove After Use
- Non-Sterile 
- Not Made With Natural Rubber Latex



EMERGO EUROPE
Westervoortsedijk 60
6827 AT Arnhem
The Netherlands

If any serious incident occurs in relation to this device, report it to Beekley Medical and to the competent authority of the Member State in which the user and/or patient is established.



REV: RTS-INF-1024