

GuideLines® CT Biopsy Grids

Why Imaging Staff Prefer Professional Grids over Improvised Solutions

Easy to plan the trajectory from skin to lesion

"Accuracy is important to get the biopsy of the intended lesion. Lung biopsies are often more challenging due to risk of dropping the lung. Any small lesion is more challenging, particularly lesions high in the liver due to movement of the diaphragm.

GuideLines makes it easy to plan the trajectory from skin to lesion while avoiding other areas that could cause bleeding or other poor outcomes. Using GuideLines is an easy way to simplify lesion targeting whereas other methods are not consistent and cumbersome."

- Vicki, IR Technologist, Ohio

Pinpoints the exact spot

"Accuracy is important; you don't want to hit an artery, cause a pneumothorax, or any other complication.

GuideLines pinpoints the exact spot for needle entry. They're single-use and better than needles taped together or paper clips."

- Vicki, IR Supervisor, Arizona

Consistent, sanitary, and accurate

"We used an improvised system with tape and BB pellets and while it worked for years, it wasn't the most sanitary or accurate system. GuideLines is consistent, disposable, and adheres well. We use them on every biopsy patient."

- Scott, CT Technologist, Pennsylvania

Fully adhesive, greater accuracy

"I really like using Mark-Through GuideLines. The adhesive is on the entire grid. It completely adheres to the patient's skin, thus reducing the chances of missing the exact spot that needs to be marked."

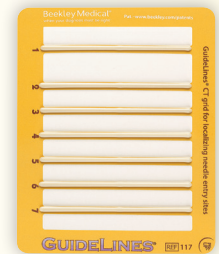
- Karen, CT Technologist, California

GuideLines CT biopsy grids help you avoid misregistration of the skin mark and the need for repeat needle adjustments which can lead to painful re-sticks and unnecessary rescans for the patient.

Optimize localization of needle entry sites and increase first stick accuracy under CT-guided biopsies with the GuideLines family of biopsy grids.

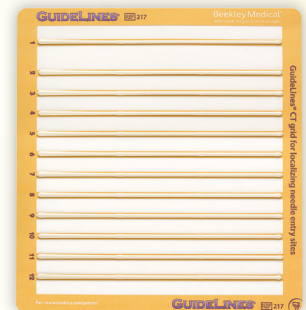
GuideLines REF 117

THE GRID WITH RAISED LINES,
ONLY FROM BEEKLEY MEDICAL

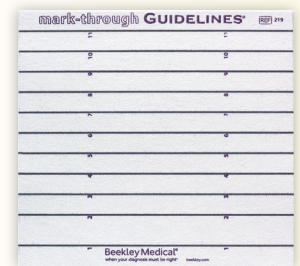


GuideLines REF 217

THE GRID WITH RAISED LINES,
ONLY FROM BEEKLEY MEDICAL



Mark-Through GuideLines REF 219



To order or request a sample to try on your next CT-guided biopsy, call 1.800.233.5539, email info@beekley.com, or visit beekley.com

Visit beekley.com for product safety information

Manufactured by Beekley Corporation
One Prestige Lane, Bristol, CT 06010-7454 USA
+1.860.583.4700 Fax: 1.800.735.1234 beekley.com

BEEKLEY, BEEKLEY MEDICAL, GUIDELINES, MARK-THROUGH GUIDELINES, THE GRID WITH RAISED LINES, and WHEN YOUR DIAGNOSIS MUST BE RIGHT are Reg. U.S. Pat. & Tm. Off. BEEKLEY is a Registered Community Trademark. BEEKLEY is a registered trademark in Canada. PIK-UP is an unregistered trademark of Beekley Corporation. © 2022 Beekley Corporation. All rights reserved.



Beekley Medical®
when your diagnosis must be right®

REV: GL-MTGL_TM_0822